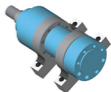
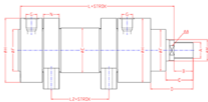
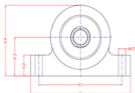
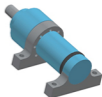
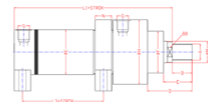
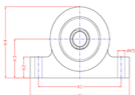


**HC01-7 /.... STANDART HİDROLİK SİLİNDİRLER (Standart hydraulic cylinders)**  
**HC02-7 /.... ISO 6020/1 CETOP R58 H Pçal=160 Bar**

HC01-7/....



HC02-7/....



PISTON	Ø32	Ø40	Ø50	Ø63	Ø80	Ø100	Ø125	Ø140	Ø160	Ø180	Ø200
M	18 / 22	22 / 28	28 / 36	36 / 45	45 / 56	56 / 70	70 / 80	80 / 90	90 / 100	100 / 110	110 / 120
A	M14x1.5	M16x1.5	M20x1.5	M27x2.0	M33x2.0	M42x2.0	M48x2.0	M56x2.0	M64x3.0	M72x3.0	M80x3.0
	M16x1.5	M20x1.5	M27x2.0	M33x2.0	M42x2.0	M48x2.0	M56x2.0	M64x3.0	M72x3.0	M80x3.0	M85x3.0
AA	14 / 17	17 / 22	22 / 30	30 / 36	36 / 45	45 / 60	60 / 68	68 / 75	75 / 85	85 / 95	95 / 105
B	18 / 22	22 / 28	28 / 36	36 / 45	45 / 56	56 / 63	63 / 75	75 / 85	85 / 90	90 / 95	95 / 100
C	31 / 35	35 / 39	42 / 50	52 / 61	63 / 74	76 / 94	86 / 98	100/110	110/115	120/125	125/130
D	50	54	66	81	99	113	123	140	151	165	170
E	40	50	60	75	95	115	150	165	190	210	245
F	40	50	60	70	85	106	132	145	160	185	200
G	R1/4"	R3/8"	R1/2"	R1/2"	R1/2"	R3/4"	R3/4"	R3/4"	R1"	R1"	R1"
H	68	78	98	108	135	158	186				
K	105	135	155	180	210	250	305				
K1	85	110	130	150	170	205	255				
K2	20	25	30	35	40	50	60				
K3	40	45	60	65	75	95	110				
K4	74	84	109	119	140	174	203				
K5	9	11	11	13	17	21	25				
L	170	190	205	224	250	300	328	360	370	425	450
L1	165	194	212	237	259	300	313	330	350	400	410
L2	40	49	56	48	70	66	80				
L3	62	78	82	97	97	109	114				
N	20	25	25	30	35	42	50				