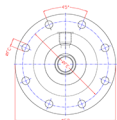
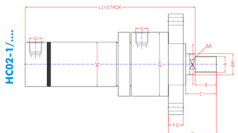
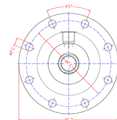
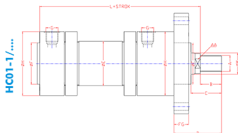




HC01-1 / STANDART HİDROLİK SİLİNDİRLER (Standart hydraulic cylinders)
HC02-1 / ISO 6020/1 CETOP R58 H Pçal=160 Bar



| PİSTON | Ø32 | Ø40 | Ø50 | Ø63 | Ø80 | Ø100 | Ø125 | Ø140 | Ø160 | Ø180 | Ø200 |
|--------|---------|---------|---------|---------|---------|---------|---------|---------|----------|-----------|-----------|
| M | 18 / 22 | 22 / 28 | 28 / 36 | 36 / 45 | 45 / 56 | 56 / 70 | 70 / 80 | 80 / 90 | 90 / 100 | 100 / 110 | 110 / 120 |
| A | M14x1.5 | M16x1.5 | M20x1.5 | M27x2.0 | M33x2.0 | M42x2.0 | M48x2.0 | M56x2.0 | M64x3.0 | M72x3.0 | M80x3.0 |
| | M16x1.5 | M20x1.5 | M27x2.0 | M33x2.0 | M42x2.0 | M48x2.0 | M56x2.0 | M64x3.0 | M72x3.0 | M80x3.0 | M85x3.0 |
| AA | 14 / 17 | 17 / 22 | 22 / 30 | 30 / 36 | 36 / 45 | 45 / 60 | 60 / 68 | 68 / 75 | 75 / 85 | 85 / 95 | 95 / 105 |
| B | 18 / 22 | 22 / 28 | 28 / 36 | 36 / 45 | 45 / 56 | 56 / 63 | 63 / 75 | 75 / 85 | 85 / 90 | 90 / 95 | 95 / 100 |
| C | 31/35 | 35/39 | 42/50 | 52/61 | 63/74 | 76/94 | 86/98 | 100/110 | 110/115 | 120/125 | 125/130 |
| D | 50 | 54 | 66 | 81 | 99 | 113 | 123 | 140 | 151 | 165 | 170 |
| E | 40 | 50 | 60 | 75 | 95 | 115 | 150 | 165 | 190 | 210 | 245 |
| F | 40 | 50 | 60 | 70 | 85 | 106 | 132 | 145 | 160 | 185 | 200 |
| FC | 9 | 9 | 11 | 13 | 17 | 22 | 22 | R322/4" | 22 | 26 | 26 |
| FD | 110 | 125 | 148 | 170 | 195 | 138 | 272 | 296 | 316 | 265 | 385 |
| FE | 92 | 106 | 126 | 145 | 165 | 200 | 235 | 260 | 280 | 320 | 340 |
| FG | 16 | 16 | 20 | 25 | 32 | 32 | 32 | 35 | 36 | 40 | 40 |
| G | R1/4" | R3/8" | R1/2" | R1/2" | R1/2" | R3/4" | R3/4" | R3/4" | R1" | R1" | R1" |
| H | 68 | 78 | 98 | 108 | 135 | 158 | 186 | 210 | 240 | 255 | 305 |
| L | 170 | 190 | 205 | 224 | 250 | 300 | 328 | 360 | 370 | 425 | 450 |
| L1 | 165 | 194 | 212 | 237 | 259 | 300 | 313 | 320 | 350 | 400 | 410 |